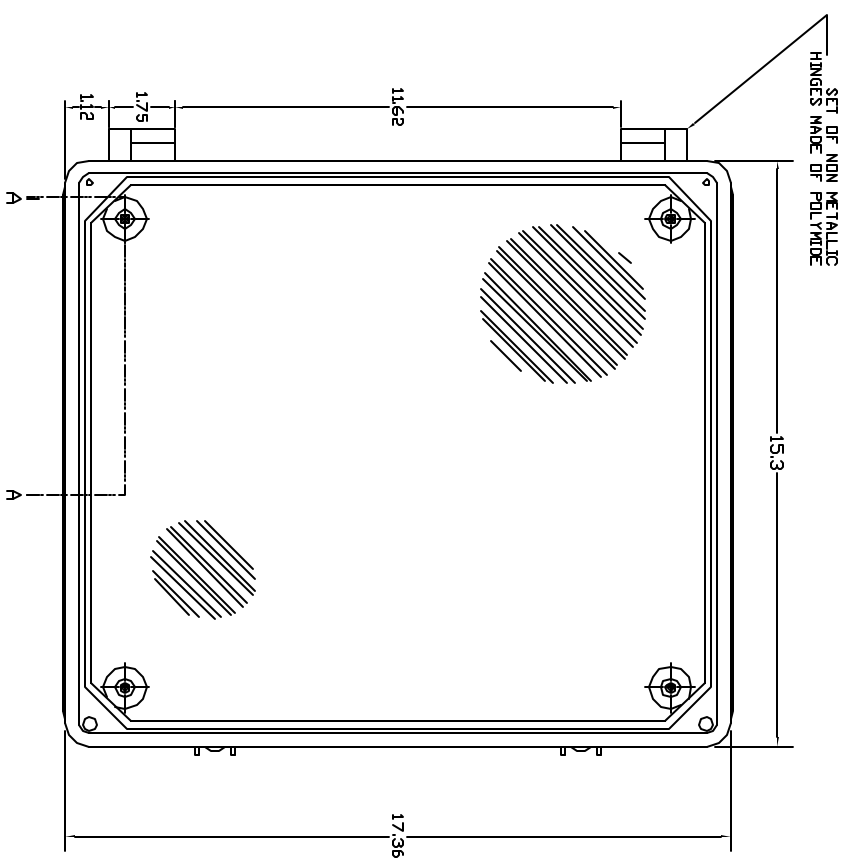
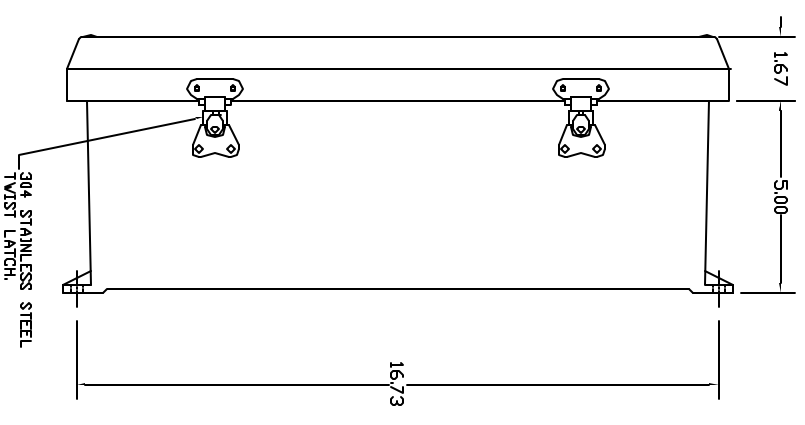


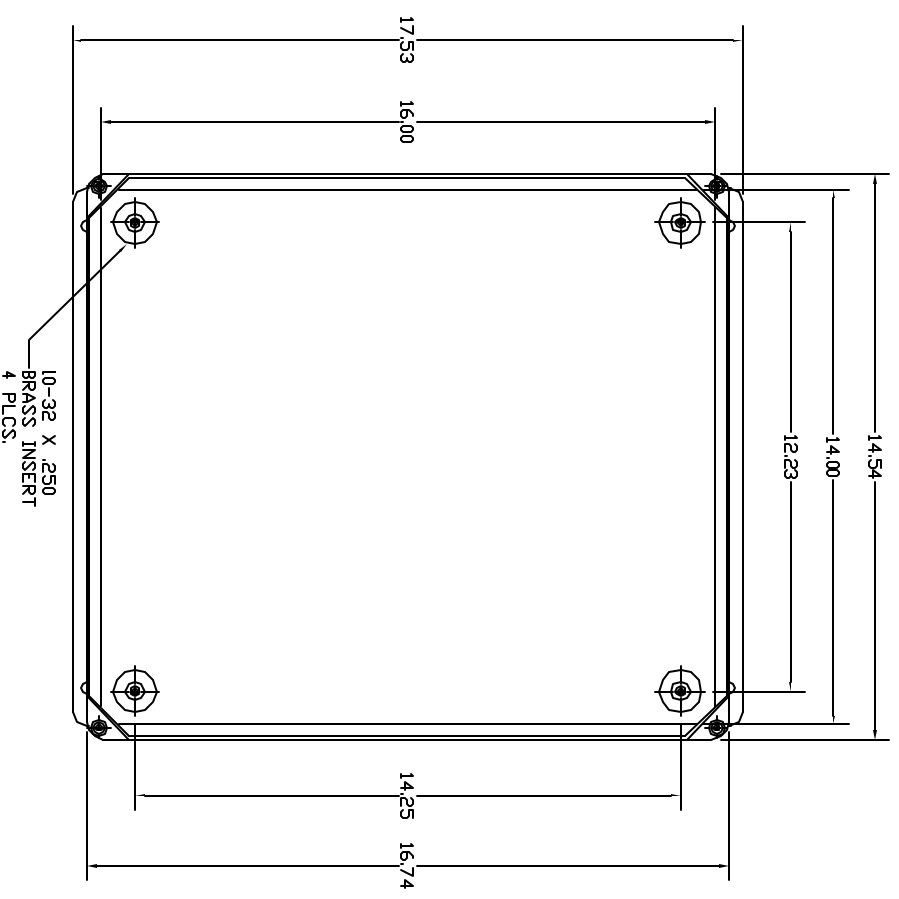
FRONT VIEW



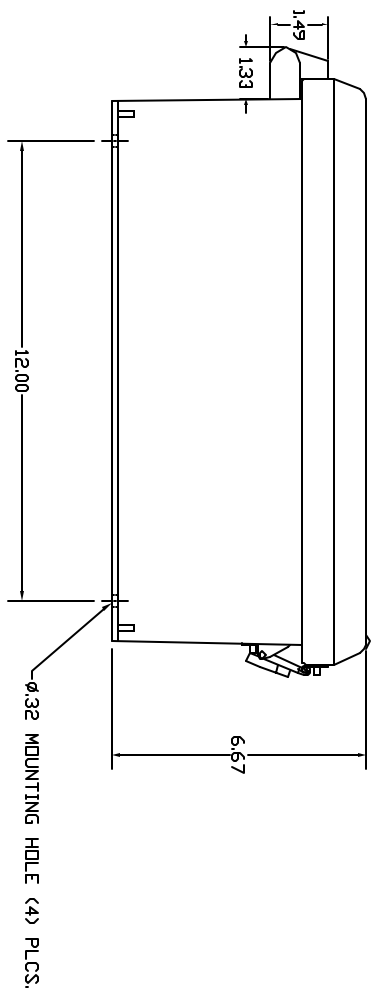
RIGHT SIDE VIEW



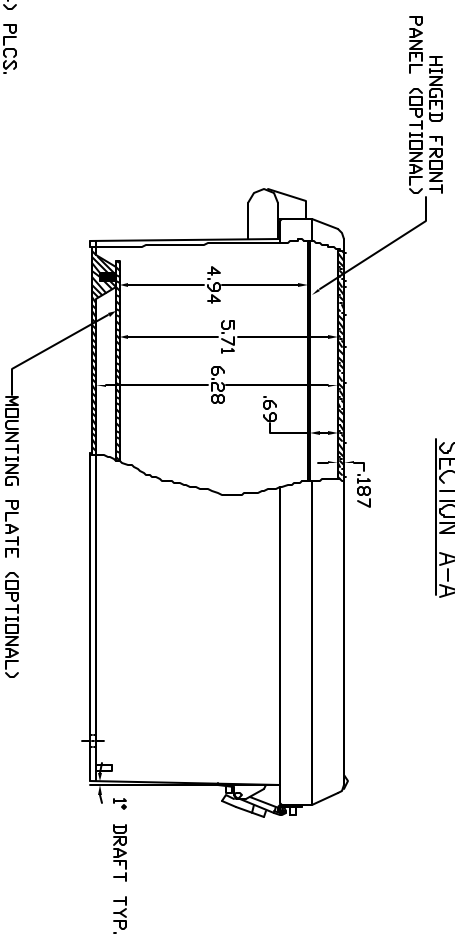
FRONT VIEW COVER REMOVED



END VIEW



SECTION A-A



- NOTES:
- ENCLOSURE MATERIAL MADE OF GRAY (RAL 7036) HOT MOLDED FIBERGLASS REINFORCED POLYESTER.
 - U.L. LISTED PER STD. 508. (FILE# E54315)
 - CSA CERTIFIED PER STD. C22.2 NO. 94. (FILE# LR36508)
 - NEMA RATED TYPE 3, 3R, 3S, 4, 4X, 12 AND 13.
 - IEC 529 RATED IP 68.
 - RESISTANT TO TEMPERATURES UP TO 150 DEG C.
 - SELF EXTINGUISHING AND HALOGEN FREE.
 - ACCESSORIES INCLUDE: BACK PANELS, HINGEABLE FRONT PLATES, HINGED COVERS, PRINT POCKET, LATCHES, WINDOWS, AND VENTILATORS.
 - CABINETS ARE MAINTENANCE FREE AND CORROSION RESISTANT.
 - BACKPANEL SIZE 14.75" X 12.88"

REVISIONS				
ZONE	REV	DESCRIPTION	DATE	APPROVED

THE DRAWING IS THE PROPERTY OF VINCICKER AND SHALL BE KEPT IN CONFIDENTIALITY. IT IS TO BE USED ONLY FOR THE PROJECT AND NOT BE LOANED, REPRODUCED, COPIED, OR IN ANY MANNER DISCLOSED TO OTHERS WITHOUT THE WRITTEN PERMISSION OF VINCICKER.		UNLESS OTHERWISE SPECIFIED DIMENSIONS ARE IN INCHES. DECIMALS ARE TO BE ROUNDED UP TO THE NEXT HIGHER DIMENSION. DATE: 2/15/21	
VINCICKER ENCLOSURE SYSTEMS, INC.		VJ SERIES ENCLOSURE VINCICKER PART# CVJ1614NHILL2	
DRAWN BY: J. CHAMBERLAIN	CHECKED BY: D. BROWN	SIZE: FROM NO.	DWG. NO.: CVJ1614NHILL2
SHEET NO.	TOTAL SHEETS	SCALE	REV. NO.